

Reproduction

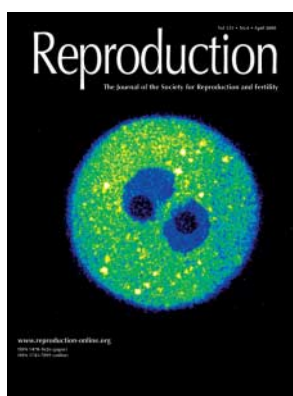
The Journal of the Society for Reproduction and Fertility

April 2008

Volume 135

Part 4

www.reproduction-online.org



Pseudo-coloured, multi-photon image of a live mouse zygote showing serotonin-rich puncta in the cytoplasm. The male and female pro-nuclei and their nucleoli are visible. Blue pseudo-colour represents low serotonin concentrations while white represents high serotonin concentrations. Courtesy B Basu and M M Panicker.

Review

The role of glia in the hypothalamus: implications for gonadal steroid feedback and reproductive neuroendocrine output

Luis Miguel Garcia-Segura, Betty Lorenz and Lydia L DonCarlos

419–429

Research

Unexpected nuclear localization of Cdc25C in bovine oocytes, early embryos, and nuclear-transferred embryos

Laurence Gall, Daniel Le Bourhis, Sylvie Ruffini, Claire Boulesteix and Xavier Vignon

431–438

Comparative analysis of oocyte transcript profiles reveals a high degree of conservation among species

Maud Vallée, Kazuhiro Aiba, Yulan Piao, Marie-France Palin, Minoru S H Ko and Marc-André Sirard

439–448

Multivariate cluster analysis to study motility activation of *Solea senegalensis* spermatozoa: a model for marine teleosts

Felipe Martínez-Pastor, Elsa Cabrita, Florbela Soares, Luis Anel and Maria Teresa Dinis

449–459

Chromatin-unstable boar spermatozoa have little chance of reaching oocytes *in vivo*

Florencia Ardón, Dietmar Helms, Evrim Sahin, Heinrich Bollwein, Edda Töpfer-Petersen and Dagmar Waberski

461–470

Mitotic, but not meiotic, oriented cell divisions in rat spermatogenesis

Raul Lagos-Cabré and Ricardo D Moreno

471–478

A comprehensive survey of the laminins and collagens type IV expressed in mouse Leydig cells and their regulation by LH/hCG

Séverine Mazaud Guittot, Adélie Vérot, Fanny Odet, Marie-Agnès Chauvin and Brigitte le Magueresse-Battistoni

479–488

D α -Tocopherol acetate mitigates maternal hyperthermia-induced pre-implantation embryonic death accompanied by a reduction of physiological oxidative stress in mice

Natsumi Sakamoto, Manabu Ozawa, Kaori Yokotani-Tomita, Aki Morimoto, Takaya Matsuzuka, Daichi Ijiri, Miho Hirabayashi, Atsuko Ushitani and Yukio Kanai

489–496

Significance of aquaporins and sodium potassium ATPase subunits for expansion of the early equine conceptus	
Sven Budik, Ingrid Walter, Waltraud Tschulenk, Magdalena Helmreich, Katharina Deichsel, Fritz Pittner and Christine Aurich	497–508
Expression and regulation of oestrogen receptors in the human corpus luteum	
Sander van den Driesche, Victoria M Smith, Michelle Myers and W Colin Duncan	509–517
Expression and localization of apelin and its receptor APJ in the bovine corpus luteum during the estrous cycle and prostaglandin F_{2α}-induced luteolysis	
Koumei Shirasuna, Takashi Shimizu, Kohei Sayama, Takayuki Asahi, Motoki Sasaki, Bajram Berisha, Dieter Schams and Akio Miyamoto	519–525
Prostaglandin F_{2α} increases endothelial nitric oxide synthase in the periphery of the bovine corpus luteum: the possible regulation of blood flow at an early stage of luteolysis	
Koumei Shirasuna, Sho Watanabe, Takayuki Asahi, Missaka P B Wijayagunawardane, Kiemi Sasahara, Chao Jiang, Motozumi Matsui, Motoki Sasaki, Takashi Shimizu, John S Davis and Akio Miyamoto	527–539
Uterine blood flow and perfusion in mares with uterine cysts: effect of the size of the cystic area and age	
J C Ferreira, E L Gastal and O J Ginther	541–550
Characterization of clonogenic stromal cells isolated from human endometrium	
R Dimitrov, T Timeva, D Kyurkchiev, M Stamenova, A Shterev, P Kostova, V Zlatkov, I Kehayov and S Kyurkchiev	551–558
Low reproductive success in <i>Per1</i> and <i>Per2</i> mutant mouse females due to accelerated ageing?	
Violetta Pilorz and Stephan Steinlechner	559–568
Pro-labour myometrial gene expression: are preterm labour and term labour the same?	
Mark Tattersall, Neelam Engineer, Shirin Khanjani, Suren R Sooranna, Victoria H Roberts, Peta L Grigsby, Zhiqing Liang, Les Myatt and Mark R Johnson	569–579

Reproduction

The Journal of the Society for Reproduction and Fertility

Cover figure competition

Readers are invited to submit figures featuring research in reproductive biology for consideration for use as the cover figure of *Reproduction*. Figures must be of high quality and resolution of 300dpi at the final published size (280 mm × 210 mm). Please contact the editorial office (reproduction@bioscientifica.com) for further information. Readers who provide images that are selected for use on the cover will be awarded a prize of £100.